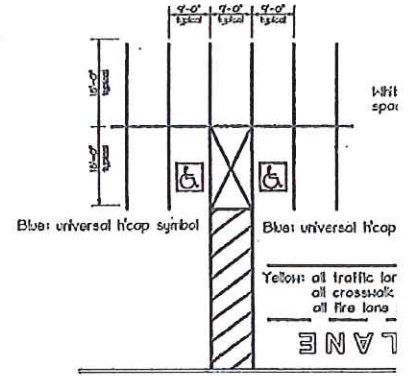


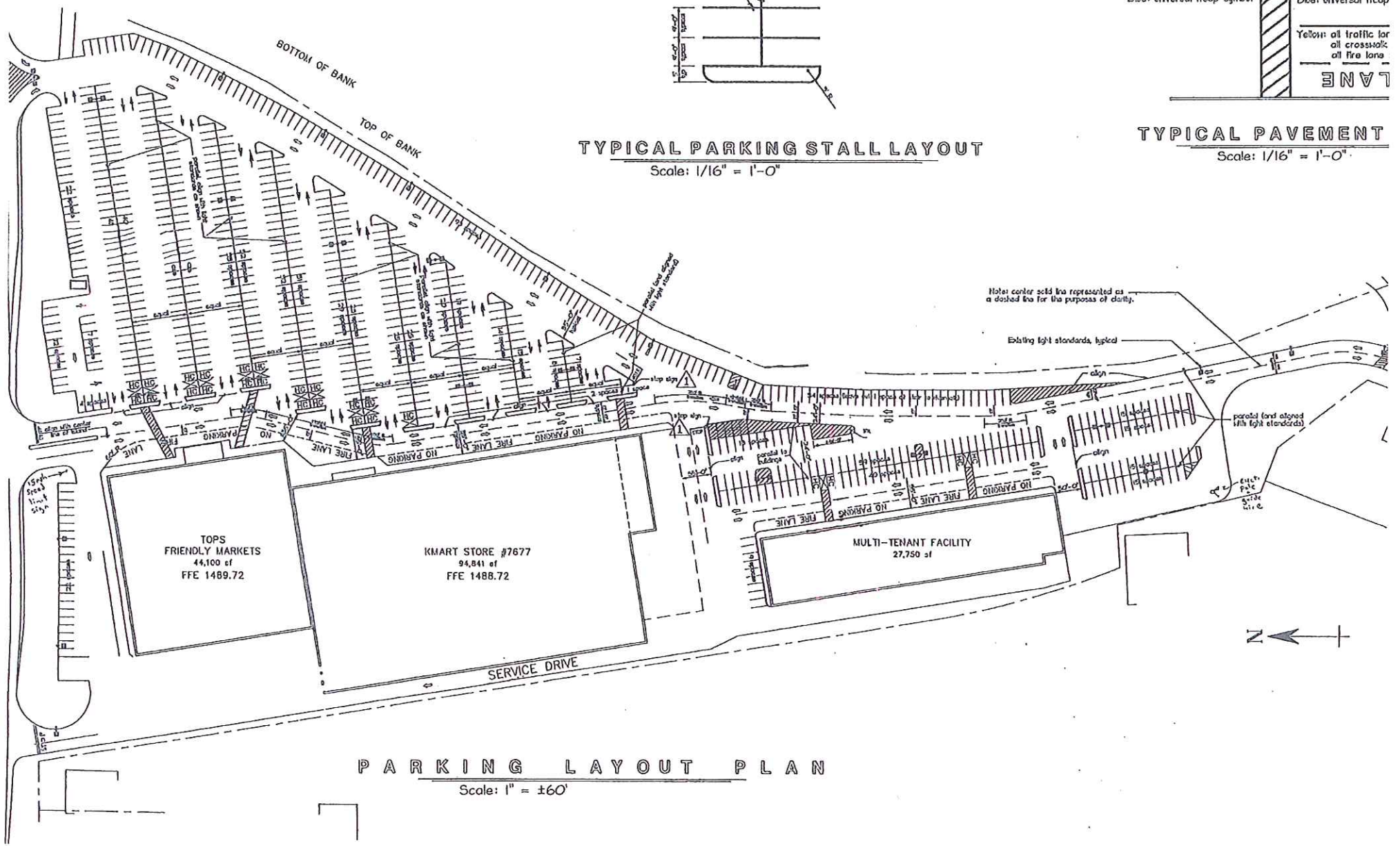
TYPICAL PARKING STALL LAYOUT

Scale: 1/16" = 1'-0"



TYPICAL PAVEMENT

Scale: 1/16" = 1'-0"



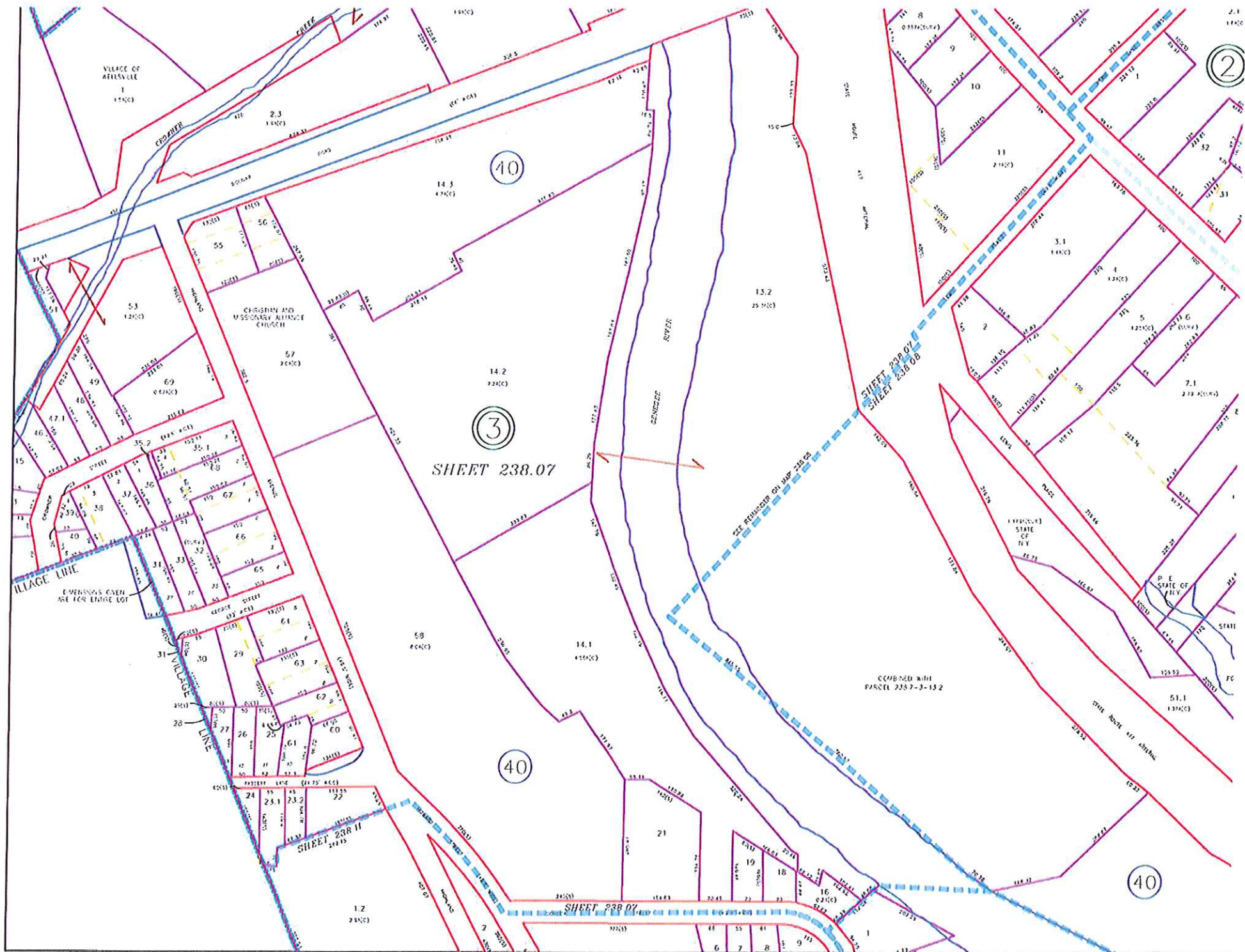
Note: center solid line represented as a dashed line for the purposes of clarity.

Existing light standards, typical

parallel (and aligned with light standards)

PARKING LAYOUT PLAN

Scale: 1" = ±60'



VILLAGE OF
AELLSVILLE
1
154(C)

2.3
154(C)

10

3
SHEET 238.07

14.2
224(C)

40

2
154(C)

COMPARE WITH
PARCEL 238.7-3-13.2

40

CHRISTIAN AND
MSSONGERY KLEINHOE
CHURCH

VILLAGE LINE
DIMENSIONS GIVEN
ARE FOR ENTIRE LOT

LEGACY STREET
(27' AC)

VILLAGE LINE

SHEET 238.11
241.15

SHEET 238.07

SHEET 238.07
SHEET 238.08

CENOCREEP
RIVER

STATE OF
N.Y.

STATE

STATE ROAD 417
STRAKE

1.2
244(C)

19

18

17

16

15

14

13

12

11

10

9

8

7

6

5.3
124(C)

4.9

4.7.1

4.6

4.5

4.4

4.3

4.2

4.1

4.0

3.9

3.8

3.7

3.6

3.5

3.4

3.3

3.2

3.1

3.0

2.9

2.8

2.7

2.6

2.5

2.4

2.3

2.2

2.1

2.0

5.1

5.2

5.3

5.4

5.5

5.6

5.7

5.8

5.9

6.0

6.1

6.2

6.3

6.4

6.5

6.6

6.7

6.8

6.9

7.0

7.1

7.2

7.3

7.4

7.5

7.6

7.7

7.8

7.9

8.0

5.1

5.2

5.3

5.4

5.5

5.6

5.7

5.8

5.9

6.0

6.1

6.2

6.3

6.4

6.5

6.6

6.7

6.8

6.9

7.0

7.1

7.2

7.3

7.4

7.5

7.6

7.7

7.8

7.9

8.0

5.1

5.2

5.3

5.4

5.5

5.6

5.7

5.8

5.9

6.0

6.1

6.2

6.3

6.4

6.5

6.6

6.7

6.8

6.9

7.0

7.1

7.2

7.3

7.4

7.5

7.6

7.7

7.8

7.9

8.0

5.1

5.2

5.3

5.4

5.5

5.6

5.7

5.8

5.9

6.0

6.1

6.2

6.3

6.4

6.5

6.6

6.7

6.8

6.9

7.0

7.1

7.2

7.3

7.4

7.5

7.6

7.7

7.8

7.9

8.0

5.1

5.2

5.3

5.4

5.5

5.6

5.7

5.8

5.9

6.0

6.1

6.2

6.3

6.4

6.5

6.6

6.7

6.8

6.9

7.0

7.1

7.2

7.3

7.4

7.5

7.6

7.7

7.8

7.9

8.0

5.1

5.2

5.3

5.4

5.5

5.6

5.7

5.8

5.9

6.0

6.1

6.2

6.3

6.4

6.5

6.6

6.7

6.8

6.9

7.0

7.1

7.2

7.3

7.4

7.5

7.6

7.7

7.8

7.9

8.0

5.1

5.2

5.3

5.4

5.5

5.6

5.7

5.8

5.9

6.0

6.1

6.2

6.3

6.4

6.5

6.6

6.7

6.8

6.9

7.0

7.1

7.2

7.3

7.4

7.5

7.6

7.7

7.8

7.9

8.0

5.1

5.2

5.3

5.4

5.5

5.6

5.7

5.8

5.9

6.0

6.1

6.2

6.3

6.4

6.5

6.6

6.7

6.8

6.9

7.0

7.1

7.2

7.3

7.4

7.5

7.6

7.7

7.8

7.9

8.0

5.1

5.2

5.3

5.4

5.5

5.6

5.7

5.8

5.9

6.0

6.1

6.2

6.3

6.4

6.5

6.6

6.7

6.8

6.9

7.0

7.1